

SMT Equipments

The feature review on SMT Equipments

SIPLACE SX PLACEMENT

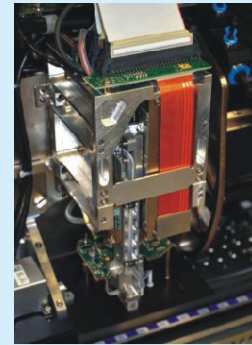
Very-High-Force Head features placement force of 70 N

With its new SIPLACE Very-High-Force Head for SIPLACE SX-series machines, ASM Assembly Systems addresses in particular the needs of electronics manufacturers who must place large components and connector modules on PCBs for automotive and automation applications without having to add a separate process. The stronger motor in the Very-High-Force Head supplies placement forces of up to 70 N, enabling it to handle even components featuring snap-in and TTH technologies. The components, which are picked up with nozzles or grippers, can be up to 30 millimeters high, up to 200 millimeters long and weigh up to 100 grams.

More options – even more applications

Additional options supplement the utility of the SIPLACE Very-High-Force Head. One of these is the special OSC package for the SIPLACE WPC 5 and WPC 6 waffle-pack changers (with non-stop modules) which enable the changer to hold up to nine trays with components that are up to 30 millimeters high. And with the SIPLACE Smart Pin Support option, users can place support pins automatically in order to prevent boards from warping as a result of the new head's high placement force. The new Very-High-Force Head is available starting in January 2013. The new SIPLACE Very-High-Force Head is able to place components up to 30 millimeters high and 200 millimeters long with a force of up to 70 newtons.

For more Information, visit www.siplace.com.



SAMSUNG

Advanced High Speed Flexible Moulder SM 481/SM 482

Based on extremely successful SM 400 Series platform SAMSUNG introduced new flexible moulder in Q2 2012 Especially for Indian SMT market. SM 481 and 482 provide optimum placement solutions to various needs of customers through the high speed On-The-Fly part placement mechanism and the vision system with high accuracy, yield and reliability. In addition, the series of component placers are provided with identical hardware and software to maximize productivity and continuity for future expansions.

The SM481 realized a chip placement speed of 39,000 CPH, the highest among the same class component placers, by applying a head with one gantry and ten spindles as well as new flying vision and by maximizing the pickup and placement motion.

The SM482 is flexible component placer whose applicability to 01005 to 55mm IC parts with QFP, micro and 75mm long connectors. SM 481 is equipped with a head with one gantry and 6 spindles with 28,000 CPH; it also supports a polygon recognition algorithm to provide an optimum solution for the application to odd-shaped parts.

Contact Details: Samsung C&T Corporation India Pvt. Ltd

New Delhi, India, Mr. Arun Kumar, Mobile: +91 9311960005, Email: arun13.kumar@samsung.com



KYORITSU AUTOMATION

ECO SMT Nozzle Cleaner

Kyoritsu Automation India Pvt. Ltd. (KA IPL) launched a new series of new innovative ECO SMT Nozzle Cleaner for their Principals M/s BOSUNG ENG – Korea in the Indian Electronics market. A main contributor to poor pick and place performance is the slowly and gradually polluting of the nozzles. In some cases it even remains unnoticed, resulting in (slightly) higher pick error rates or (slightly) increased place performance, leading to board defects. The new ECO SMT Nozzle Cleaner revolutionizes nozzle cleaning technology using its Automatic Cleaning Sequence and Indexing System that includes an integrated drier unit as standard. A friendly Programmable Logic Controller (PLC) with touch-screen control allows simple programming of nozzle cycle cleaning processes; with up to 12 nozzles cleaned and processed. Cleaning and drying are programmed in sequence and can be independent for total flexibility.



Features & USP:

- Mounting efficiency improvement
- Pick up rate improvement
- Quality improvement
- Labour saving effect
- The Effect of Carbon reduction by using distilled water.
- Possible to clean 12 nozzles at the same time.
- Reduces the time to change the nozzle by using the nozzle holder.
- Able to wash and dry internal/external part of nozzle
- Simple operating method(Operating-automatic mode via onetime button pressing)
- Function to inform completion of wash

For further details: Ph: (0250) 2471678 ; sales@kyoritsuautomation.com

Rehm THERMAL SYSTEMS

Rehm's VXC highlights convection reflow

Rehm Thermal Systems successfully introduced its latest configuration the Vision XC Convection Reflow Oven last year. Designed and now also locally produced in the heritage of Rehm's globally renowned German technology and manufacturing standards, the newest Vision XC offers a host of proven technology features tailored to address the special needs of the evolving Asian electronics assembly industry and Rehm's rapidly growing base of loyal customers with both high volume and diversified product portfolios.



Lowest cost of ownership is a hallmark of all Rehm Thermal Systems. Energy savings and low nitrogen consumption combine with ease of operation and fast maintenance to make the VXC a prime choice for prudent operations. Environmental awareness is another Rehm trademark, and the VXC boasts a high efficiency flux management system that maintains both a clean process chamber and clean environment outside.

Asynchronously controlled dual lane options enable high flexibility and high throughput – often made mutually exclusive by many other designs. And, as with all Rehm systems, an unmatched level of precise thermal control guarantees process repeatability essential for interconnection reliability. All backed by a world class, full service technical support organization that has made a name for itself throughout demanding Asian markets.

Learn more about the new Vision XC and the entire lineup of Convection, Condensation and Vacuum Soldering solutions at www.rehm-group.com.

MAXIM SMT

Driven by a Customer centric corporate philosophy and aided by world class quality products and services, Maxim SMT is a dynamic company that specializes in equipment supply and service to the electronics manufacturing industry. Maxim SMT helps customers in all aspects of high technology solutions, be it pre-sales counseling, post sales equipment services and turn-key projects.

Maxim SMT Technologies are authorized sales and service provider / representative for the below mentioned world's leading brands .

1. Nutek -Singapore - World Class Peripheral Equipments form SMT and Semicon Industries.
2. DEK - United Kingdom- Leading Supplier for Solder Paste Printing Machines.
3. Vitronics Soltec -USA / China - Leading Supplier for Reflow, Wave Soldering and Selective Soldering Equipments.
4. Cyber optic Inspection system-USA - Automatic Optical Inspection System (AOI) and Solder Paste Inspection system (SPI)
5. Cencorp / Savcor - Finland - Manufacturer of PCB Routers and Testing Equipment Compact Laser Marking Work Station
6. PVA - USA - Leading Supplier for Conformal Coating and Underfil Equipments.
7. ECD -USA - Thermal Profilers for the Electronics Manufacturing.
8. Aprotect Instrumentation-United Kingdom - World Leaders in Solder Paste Measuring, Inspection Equipments and Solder Saving.
9. OK International- UK - Complete range of Lead-Free Soldering/Desoldering irons and Rework Stations
10. Japan Unix- Japan – Automatic Robotic Lead-Free Soldering Machine
11. InterSelect, Germany - Selective Soldering Machines.
12. Asscon, Germany – Vapour Phase Soldering Systems
13. GETech, Singapore – PCB Routing Machines
14. Smart Sonic Corporation, USA - Ultrasonic Batch Type Stencil Cleaners
15. Stencil Manufacturing Plant- Manesar – We are manufacturing complete Laser Stencils Under License from DEK International GmbH

DEK- DEK has developed screen printing technologies for leading-edge electronic assemblers since 1969, playing a pivotal role in developing surface mount assembly into the high-speed, high-accuracy, highly repeatable process.

Fully Automatic Solder Paste Printer: Horizon Series

Features:

- Process alignment capability 2 Cpk @ +/-25 microns 6-Sigma
- Machine alignment capability 2 Cpk @ +/- 12.5 microns 6-Sigma
- 12-second core cycle time
- DEK camera
- InstinctivT V9 user interface
- ISCAN™ Intelligent Scalable Control Area Network
- Full size stencil frame capacity



Vitronics Soltec- Vitronics Soltec is specialized in the design and manufacturing of mass soldering equipment for the global circuit board assembly market. Products are covering the Reflow, Wave and Selective Soldering markets.

Lead Free Reflow Oven: MyReflow MR+933

The MR933 reflow soldering system is being introduced as a cost-effective, proven performer.

The MR933 is being promoted as the Smart choice because



SMART is an acronym for its key features - Standard, Mature, Affordable, Reliable, and Technology.

Features of MR933

- High Throughput
- Short Footprint
- Low Energy Use
- Low Surface Temperature
- Minimal Delat T
- Reduced Energy Consumption
- Increased Heat Transfer
- Integrated Gas Management
- Meets The Lead Free Challenge

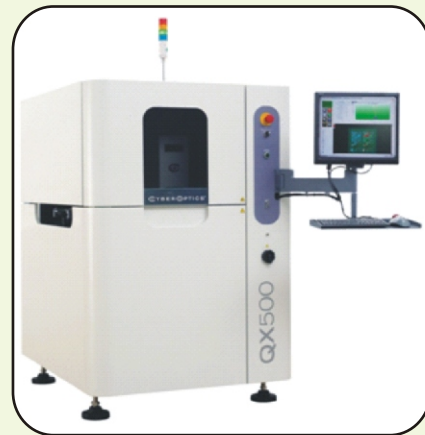
CyberOptics-For 25 years, CyberOptics has provided industry leading process control sensors and inspection systems, primarily focused in the electronics assembly equipment market with main product line as Automatic Optical Inspection system (AOI) & 3D SPI

Inline AOI QX 500

The QX500 embraces CyberOptics unique image acquisition solution - Strobed Inspection Module (SIM) and is capable of inspecting 01005 components and larger at 200 cm²/sec, securely positioning itself as the fastest area-scanning Automated Optical Inspection system in the industry.

Features

- Patented SAM vision technology
- The lowest false-call rate in the industry
- Inspects "Anything"
- Simple program creation and tuning
- learns acceptable process variation
- Detecting the widest variety of defect types
- No parameters to adjust and no algorithms to select or tune



Nutek- Nutek vision is to be the world class leader in PCB Handling Equipment for Electronics industry.

Product Range

- Inspection & Linking Conveyors
- Automatic Magazine Loaders & Un-Loaders
- Custom Made conveyors & many others
- Bare Board Loader
- Work stations

Features

- Sturdy and stable design
- User friendly 'soft touch' LED membrane control panel
- Pneumatic clamps provided for magazine alignment
- Pneumatic pusher's pressure regulated
- SMEMA compatible

Contact:

Maxim SMT Technologies Pvt. Ltd.

T +91 124 4346042-43

Sales Enquiry: sales@maximsmt.com

Website : <http://www.maximsmt.com>

Contact : Vikram Sharma (Business Development Manager)

Mob: +91 9540870431, E Mail: vikram@maximsmt.com



DVS INDIA

X-Scope 1800 : Fully Programmable X-ray system

The X-Scope 1800 is a general purpose, high resolution, fully programmable x-ray system designed to address the nondestructive testing needs for failure analysis, research and development, process development, process monitoring and the ongoing support of electronics assembly, rework and repair.

The X-Scope 1800 is a "batch" or manual type of x-ray system and includes a Windows based PC workstation with multiple image processing functions for real time measurement and data collection. The X-Scope 1800 has an unbeatable price to performance ratio and many advanced features you would expect to find on a much more expensive x-ray imaging system.

Scienscope has combined ease of use, excellent image quality and low price in the development and introduction of the X-Scope 1800.

Features:

- Digital Flat Panel X-Ray Detector provides High Spatial Contrast
- Detect subtle density / grayscale differences with 4096 grayscale capability
- Tilting x-ray tube and x-ray detector allows for maximum magnification during oblique viewing
- Navigation camera stage control with programmable inspection routines
- Semi-automated pass/fail inspection routines provide consistent inspection results
- 90 kV 5 micron x-ray tube provides optimum penetration / defect identification
- Small space saving design with 16"x18" sample stage
- Full featured image processing software with manual and automated measurement capabilities
- Measurement results can be saved to the PC in a variety of formats
- Simple Network and Internet connectivity allows test results to be easily shared
- Online assist program makes additional operator training simple and efficient
- All inspection parameters can be easily recalled with a point and click of the mouse

Contact:

DVS India Pvt Ltd

E: rs@dvs-india.com T: +91 11 4050 2050 Web: www.dvs-india.com



MECTRONICS MARKETING SERVICES

Metcal Scorpion Rework System

The Scorpion Advanced Package Rework System from OK International ensures both accurate component placement and custom tailored reflow profiles in one user friendly, single platform rework system. The Scorpion System redefines precision and addresses the technical demands presented by component manufacturers today.

The challenges of array package rework, and the inability to easily inspect placement accuracy, call for a solution that allows for simultaneous viewing of Printed Circuit Board pads and component balls for accurate placement.

The Scorpion Rework System fills this need with quick, accurate placement through the use of an all new vision system employing dual image overlay technology. This new vision system features LED lighting both top and bottom for shadow-free component visualization and component alignment. The HD camera is ready to go out of the box.

The two-head modular design allows the Scorpion Rework System to be tailored to the users specific rework needs and allows precision alignment of the smallest BGAs, QFNs and Micro SMDs with the highest accuracy. The open-ended board holder fits a wide variety of large, small and odd-shaped boards while allowing precise positioning over the patented dual subzone preheater.

The standard auto-profile mode ensures fast and easy profile creation with a minimum of setup time. By selecting your temperature targets any operator can quickly and accurately create reflow profiles for a wide variety of boards, and then save them in memory for future use.

Source temperatures and time intervals can be modified "On-the-Fly", eliminating the need to wait for the current profile to terminate before modifications can be made. Precise solder joint

temperatures are measured and displayed on a real time graphical display, thus providing the necessary data to accurately and easily establish the optimum reflow profile for each particular application within minutes.

The modular design of the Scorpion Rework System allows it to be configured to the users specific needs. The two-head system with precision placement package features placement accuracy to 0.0015" (.038mm). The standard single-head system provides placement accuracy to 0.004" (.1 mm).

The Scorpion system accepts the full range of APR and QX series reflow nozzles. Flux transfer plates and solder paste plates are available to ensure repeatable process control during the replacement operation.

Contact Details:

Mectronics Marketing Services

309-311 /406, Ashish Corporate Tower, Karkardooma Community Center, Delhi-110092

Phone: 011-22375108 / 43041581 Email: pankaj@mectronics.in Web: www.mectronics.in

